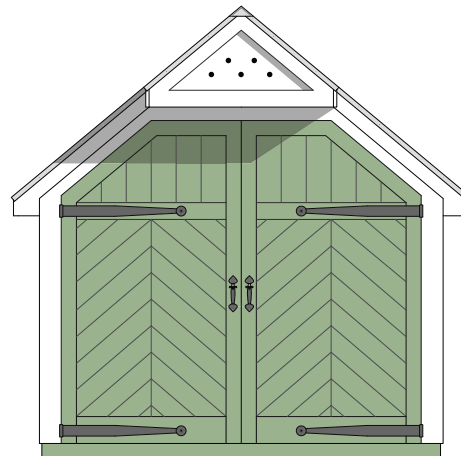


Chesapeake Carriage Shed ©

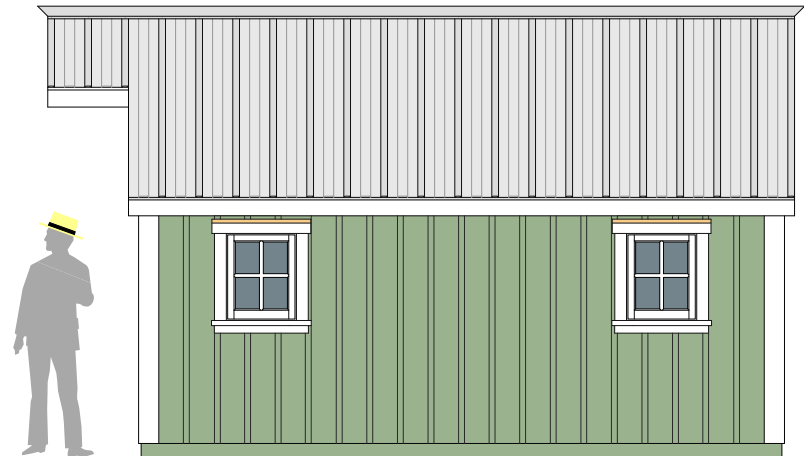
©2007, Gardensheds Inc.

With its oversize 9' outswing carriage-style doors, this building is perfect to house an antique automobile, a tractor, motorcycle collection, snow mobile, ATV, golf cart, bikes or general equipment. The building also functions well as a workshop/studio for a cabinetmaker, metalsmith, ceramicist, painter or photographer. Subtle details define this building — Chevron pattern doors with strap iron hardware, board and batten siding, ribbed tin roof, solid mahogany four-square windows, vented dove-cote gable overhang with recessed down spot light, and a multi-step finishing process. A choice of three carriage door designs are available which can be placed at one or both ends of the building. For those who prefer to set the building directly on a concrete foundation an interior wood floor is optional. An interior loft with ladder provides additional storage space. Standard length is 20', but custom lengths up to 32' are also available. Open the doors and drive in!

Gardensheds[®]
PEPPER POT FARM, ca. 1729



FRONT ELEVATION

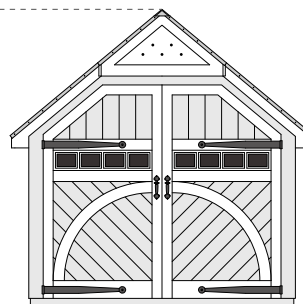


SIDE ELEVATION

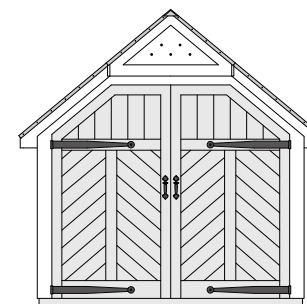
10'W x 16'L



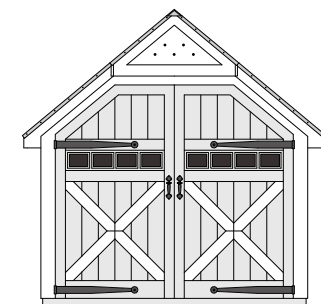
Ford Explorer inside 10'W x 20'L



CRESCENT



CHEVRON QUILL



CROSS-BUCK